

- 2 Resis 100Ω
- 2 Resis 680Ω
- 1 Resis 470Ω
- 2 capa 47nF ceramic
- 1. capa 47pF 10V
- 1. capa 1nF ceramic
- 1. 1W 4148
- 1 quartz 2MHz
- 1 TL 111
- 1. 7404
- 1. 7411
- 1. 6850
- 2 fiches Din 5B
- 1 connecteur 16PTS
- 10 Strappi a 12,5
- 1 Strappi a 2,5

colle componenti

Cote numero
 ECHS
 INTERFACE A101 SX
 Versione 5/8/84

Plan de Perçage

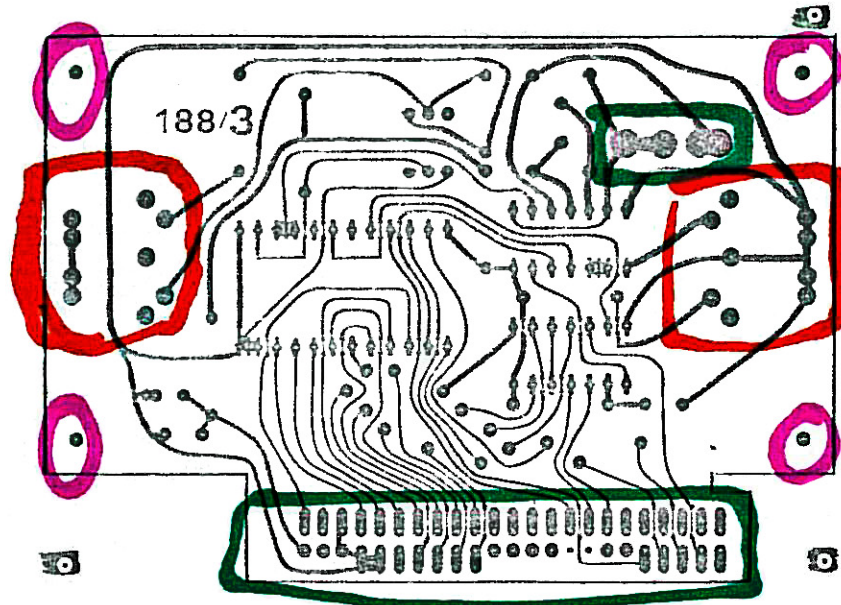
$\phi 5,2$

$\phi 1,3$

$\phi 1,1$

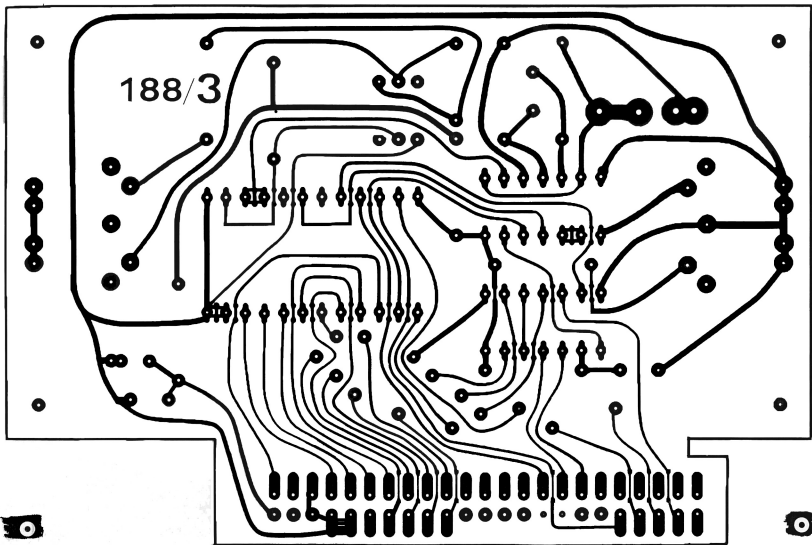
autres Trous $\phi 0,8$

Simple face



188/3 INTERFACE Y101 ZX 164-1188
16/10 9/18-184

ce circuit Annule tous les autres 188



cate' ouia ECH2

INTERFACE MINI ZX 164-1188

Mexico 2/8.184